

## 2/6 Camilla Place

### Table of Contents

- | [Property Details](#)
- | [Photo Gallery](#)
- | [Map](#)
- | [Contact For Inspection](#)

## Property Details

**2/6 Camilla Place, GOONELLABAH**



**SOLD BY THE WAL MURRAY TEAM**

2  1  1 

Wow, here is a property your friends will envy and you will be proud to call home.

Fully detached modern duplex unit built in 2008 and maintained in outstanding condition by the original owners.

Nestled in a quiet cul de sac, located amongst beautifully established gardens whilst enjoying views over Tucki Creek this is a property you will enjoy coming home to.

You will love the open plan living area with air-conditioning and beautiful hardwood polished timber floors. Sit back,

- 2 Bedrooms
- 1 Bathroom
- 1 Garage
- Air Conditioning
- Remote Garage
- Floor boards
- Built In Robes
- Dishwasher

relax and enjoy views over Tucki Creek and beyond from the large enclosed sunroom. Let your cooking skills shine in the beautiful spacious kitchen with gas cooktop, pyroletic oven, dishwasher, double bowl sink and large benchspace.

The home features 2 big bedrooms, both with ceiling fans and generous built-in robes whilst the master bedroom is air-conditioned.

The bathroom has bath, shower and vanity with separate WC. Internal access from the lockup garage which has extra width and features a control a door.

Take a stroll through the gardens to a large enclosed utility space which could serve a variety of purposes such as workspace, studio, rumpus room or storage. There is also a fully paved BBQ undercover and set amongst beautiful established gardens. The gardens feature a variety of natives, magnolia and a lovely coastal bottle tree.

This free standing home has no strata fees or body corporate and features 3KW solar electricity.

We welcome your early inspection by phoning Gary on 0414 664 731.

---

**\$449,000**



## Photo Gallery



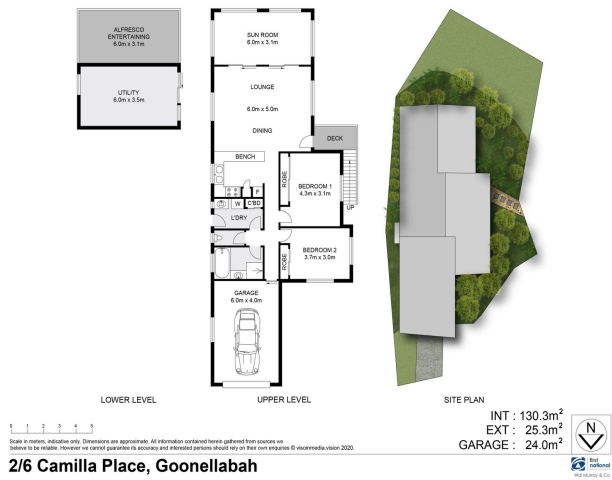




LOWER LEVEL UPPER LEVEL SITE PLAN

INT : 130.3m<sup>2</sup>  
EXT : 25.3m<sup>2</sup>  
GARAGE : 24.0m<sup>2</sup>

2/6 Camilla Place, Goonellabah





## Map

